



**ALTIUS Series**  
**Hydraulic Rock Breaker**  
**Pneumatic Crawler Drills / Top Hammer**  
**Bucket Crusher**  
**Hydraulic Attachments**

**ALTIUS EQUIPMENTS**  
CONSTRUCTION AND MINING EQUIPMENTS



**ALTIUS EQUIPMENTS** offers a broad range of sophisticated equipments which provide an easy and holistic solution for various types of construction and demolition needs. Our equipment's are being used in varied types of mines and construction sites.

**ALTIUS** is headed by leaders, who have been in the industries for over four decades and have closely worked on various different types of projects and have learnt about the different difficulties faced during each.

The Company has the manufacturing facility at Bengaluru, Karnataka.

We at **ALTIUS** are driven by two core values, the first being customer satisfaction and second being technical innovation. It has been these two values that has bought us this far and helped us to grow and expand beyond India.

Both these values are only achievable through persistent. Research and Development and ensuring high standards of quality are maintained at all times.

#### **Our Product Range:**

- ❖ **Hydraulic Rock Breaker**
- ❖ **Pneumatic Crawler Drill / Top Hammer**
- ❖ **Bucket Crusher**
- ❖ **Vibro Ripper**
- ❖ **Drum Cutter**
- ❖ **Hydraulic Attachments**

#### **Service Support System**

In order to provide quick and holistic solution to our customers we have spread a vast distribution network Pan India. Our distributors are situated at all strategic locations of the country and have adequate stock of consumables and spares which can be supplied to our customers in on time.

Our service engineers are well trained and equipped to resolve any technical difficulties that may arise on sights there by reducing the down time.

*Where Ever You Are,  
Where Ever You Go,  
Altius Equipment Will Always  
Be Just A Call Away.*



## SMALL & MEDIUM HYDRAULIC ROCK BREAKERS

**EBR SERIES A SILENT BREAKER FOR EXCAVATOR. A COMPREHENSIVE RANGE OF BREAKERS FOR PERFECT MATCH AND HARMONY WITH YOUR CARRIER & EXCELLENT JOB APPLICATION**

- ❖ Easy Maintenance due to Simplification of Parts
- ❖ Faster Checking & easier maintenance by exterior control valve
- ❖ Vibrating absorption and Noise Reduction by MC Plate to both ends of Breaker.



Specifications		EBR 30JS	EBR 80JS	EBR 120JS	EBR 210JS
Operating Weight	tons	185	460	950	1700
Operating Pressure	kg/cm <sup>2</sup>	90-120	120-150	150~170	160~180
Required Oil Flow	lpm	25-50	50-90	80~110	140~170
Blow Rate	bpm	600-1100	400-800	350~700	360~460
Tool Diameter	mm	53	80	100	135
Relief Valve Pressure	kg/cm <sup>2</sup>	140	170	190	200
Suitable Carrier	ton	2.5-4.5	6-9	10~15	18~26





## HEAVY DUTY HYDRAULIC ROCK BREAKERS

### S Series High Performance Breakers Offer

- ❖ High efficient design.
- ❖ More power and impact energy than competitors.
- ❖ Low operation costs Minimum Moving Parts reduce machine down time.
- ❖ Wide application range.



Specifications		EBR 300JS	EBR 350JS	EBR 450JS	EBR 600JS	EBR 800JS
Operating Weight	tons	2200	2900	3700	4200	4800
Operating Pressure	kg/cm2	160~180	180~210	180~210	190~220	190~220
Required Oil Flow	lpm	150~195	200~250	210~260	220~270	240~290
Blow Rate	bpm	350~700	250~380	200~350	200~250	180~200
Tool Diameter	mm	150	165	175	185	195
Relief Valve Pressure	kg/cm2	220	220	250	250	250
Suitable Carrier	Ton	27~35	36~45	40~50	45~55	50~75

### ALTIUS HYDRAULIC BREAKER ENHANCES POWER, DURABILITY AND LEVEL OF CUSTOMER SATISFACTION





## PNEUMATIC CRAWLER DRILL

**ALTIUS** Drill at present are being used in the most rugged and rough terrains.

APD 100 Drill is used friendly and its hi-tech design enables easy maneuvering of the asset.

At **ALTIUS** we understand the significance and the value that the down time may cause. Thus it's been our constant endeavor to strengthen and widen our dealership network so that the availability of spare parts and service support is always maintained at optimum level.

### Salient Features :

The machine can be easily accommodate & operate at minimum space.

New heavy duty square boom provided in this machine minimizes the maintenance cost of the machine.

### Heavy Duty Traction

Simple traction design as per the need of site requirements. Powered by 6 H.P. air motors 2 Nos. all the system is very simple to repair and maintenance.

### Power Full Feed

The drill is equipped with a very power full 6 H.P. air motor with a gear box which all four motors are of small design & interchangeable with each other. Which help to reduce cost of maintenance and operating cost.



Specifications	APD 100 DTH	APD 100 (Drifter)
HOLE RANGE	89-115 mm	52-76 mm
HOLE DEPTH	50 ft	50 ft
ROD LENGTH	3 mtrs	3 mtrs
WEIGHT	2690 kg	2690 kg
SPEED	3.5 km/hr	3.5 km/hr
RECOMMENDED AIR COMPRESSOR	450 / 150 cfm / psi	600 / 100 cfm / psi





## PNEUMATIC CRAWLER DRILL

APD 150 Track mounted Pneumatics Operated Drill capable of drilling 102-115mm (4" - 4 1/2") dia hole and high performance for handling all types of drilling operations. Excellent customer service supports, have rendered 'ALTIUS' Products as the one amongst the 'Best' and high productivity and Low maintenance cost.

### Salient Features :

The machine can be easily accommodate and operate at minimum space.

New heavy duty square boom provided in this machine minimizes the maintenance cost of the machine.

### Heavy Duty Traction

Simple traction design as per the need of site requirements. Powered by 11 H.P. air motors 2 Nos. all the system is very simple to repair and maintenance.

### Power Full Feed

The drill is equipped with a very power full 6 H.P. air motor with a gear box which

### Wide Track Chain

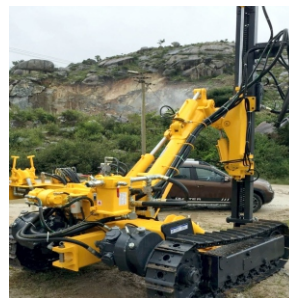
Drill having 260 mm track shoe with long length for more stability and movement in rough terrain.



### Specifications

### APD 150

HOLE RANGE	102-115 mm
HOLE DEPTH	50 ft
ROD LENGTH	3 mtrs
WEIGHT	5200 kg
SPEED	3.2 km/hr
RECOMMENDED AIR COMPRESSOR	450 / 200 cfm / psi





## BUCKET CRUSHER

Rotary system enables ideal performance in the presence of iron, rock, deformable parts or wet or humid material.

Excellent for crushing reinforced concrete and demolition waste.

Crushed bucket have capacity to crush material in various sizes.

Exceptional cutting force enables crushing of any materials.

Operating speed and efficiency due to drum design and wide mouth.

Increased protection and working life due to teeth with large anti-wear surface.

Simple, quick teeth replacement.

Downtime on the site is eliminated due to valve permitting continuous rotor rotation without operator intervention.



TECHNICAL SPECIFICATIONS		ACB 1200	ACB 1500	ACB 2000	ACB 2500
Width	mm	1500	1700	1900	2100
Bucket capacity (SAE)	m <sup>2</sup>	0.45	0.6	0.75	0.85
Rotor width	mm	840	965	1100	850
Number of Teeth	no	6	7	8	8
Operating weight - empty	kg	760	950	1150	1620
Operating weight - fully loaded (1) (2) (3)	kg	1200	1500	2000	2500
Required Oil Flow	l/min	70-150	70-150	70-150	120-300
Required Oil Pressure	bar	350-200	350-200	350-200	350-200
Carrier weight	ton	7-16	14-20	16-24	24-34

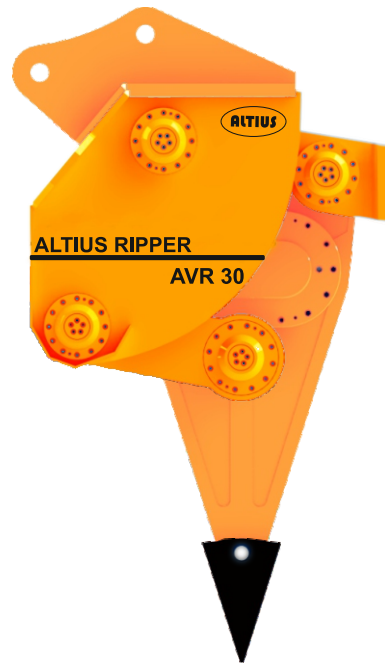


## VIBRO RIPPER

ALTIUS Ripper is revolutionary excavator attached for excavation of rock and demolition of concrete structures. It is based on an impact vibration accumulation technology, which enables excavation and demolition in less time for lower cost and with minimal noise.

The ALTIUS Ripper's closed energy chamber cannot be influenced or damaged from the outside by dust, water or dirt. Therefore it can work without any problem in the most servers conditions including tunnels, foundations, even under water.

- ❖ Higher Productivity then hydraulic breaker.
- ❖ Minimum vibration to excavator & Operator at hard rock.
- ❖ Minimum Noise
- ❖ Easy on site maintenance & low maintenance cost.
- ❖ Underwater operation without special device



TECHNICAL SPECIFICATIONS		AVR 15	AVR 25	AVR 30	AVR 40	AVR 50
Suitable Excavator	ton	12~17	17~26	22~36	34~42	42~60
Frequency	bpm	3200~4000	2800~3600	2600~3600	2200~2800	3200~4000
Weight (Incl. Mounting Cap)	kg	1500	2300	3450	4150	5100
Oil Pressure (Setting Pressure)	bar	240 (280)	260 (300)	270 (300)	270 (300)	270 (300)
Max. Operating Oil Flow	lpm	150	190	220	260	300





## DRUM CUTTER

ALTIUS Drum Cutter heads are ideal for trenching, profiling and resurfacing rock and cement walls, tunneling, quarry, demolition, dredging and finishing operations.

Drum Cutter are highly effective conventional excavation system are two weak and percussion systems have little effect.

Drum Cutter are quiet operation allows them to be put to work in sensitive or populated areas.



### ADVANTAGES

- ❖ Precision Cutting
- ❖ Low Vibrations
- ❖ High Performance
- ❖ Low noise output
- ❖ Narrow, deep trenching
- ❖ Underwater works
- ❖ Maintenance-free
- ❖ Milled material usable on site

TECHNICAL SPECIFICATIONS		ADC 400	ADC 600	ADC 850	ADC 1100	ADC 2100
Recommended excavator for weight	ton	6-12	9-16	14-22	20-34	28-45
Standard drum with (HP)	mm	625	700	800	850	950
Weight without bracket	kg	470	640	1140	1465	2410
Hydraulic motor power	kw (hp)	37(50)	50(68)	61(83)	87(118)	112(152)
Torque	kNm	4.6	6.9	10.6	17.5	22.7
Cutting force	kN	20.3	27.6	35.2	53.4	64.3
Max. pressure	bar	350	350	350	350	380
Required oil flow	min	65-120	90-150	130-190	170-250	240-340
Drum diameter - HP	mm	450	500	595	660	750
Height without bracket	mm	900	960	1250	1310	1575
Drum Distance	mm	130	130	150	160	175
Tooth holder diameter	mm	22	22	38/30	38/30	38/30



**Hydraulic Attachments suitable for 7-60 Ton class excavator.**

### **ROTATION CRUSHER**

The Crusher is made primary & secondary demolition for reinforced concrete and shearing for scrap steels. This allows dedicated and precised demolition, minimum noise level & vibrations with 360° rotation.

### **CLAM SHELL**

Clamshell bucket is designed to be attached any excavator. The dual hydraulic cylinders/rams mounted on the outer top side of the bucket provide excellent digging force.

They are used for unloading coal, iron-ore and clinker from the wagon. Powerful Bucket with two vertical cylinder Using hardox steel & less wear in surfaces & wedges. Optional rotating design available.

### **ROTATABLE GRAPPLE**

Rotatable Grappler can be easily mounted on any excavator. They are designed to handle for scrap, stone & garbage. High Strength and abrasion resistant steel for durability. Minimize assembly clearance for accurate working. Much comfortable space design for easy maintenance.

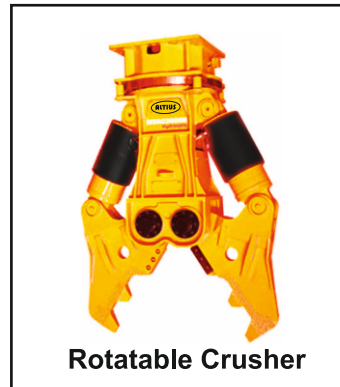
### **Quick Coupler**

Quick Coupler can solve the need to move the entire excavator to complete the job requirements and improve work efficiency by simply tilting. At the same time replace the more attachments. The overall design is compact, light weight. long service life.

### **Ripper**

Ripper use for trenching & pipeline work, digging soil & Irrigation work break hard soil, frozen ground, Pavment & Rock

## **HYDRAULIC ATTACHMENTS**





## HYDRAULIC VIBRATING COMPACTOR



### ALTIUS FCO Series Fixed Vibrating Compactor

- ❖ Simple Operating Device
- ❖ Minimum Maintenance
- ❖ Fast, Easy Installation
- ❖ No Greasing Required
- ❖ High Impulse Force
- ❖ Unique designed shock absorber

Specifications	Models	FCO 08	FCO 14	FCO 20	FCO 30
Impulse Force	ton	3~4	6~7	9~10	10~11
Vibration Per Minute (Max)	vpm	2200	2200	2200	2200
Required Oil Flow	lpm	60~80	80~110	110~140	130~160
Operating Pressure	kg/cm	90~130	100~140	130~160	140~170
Operating Weight	kg	380	675	900	1100
Plate Size	mm	800 x 450	990 x 760	1300 x 850	1480 x 950
Suitable Carrier	ton	6~10	12~16	18~24	26~36

## DRILLING TOOLS & ACCESSORIES

ALTIUS has a extensive range of products of drilling tools for mining and constructions and accessories like DTH hammer, Button bits, Drill rods, Shank Adapters & Coupling Sleeve for Solving all kind of drilling needs.



## PORTABLE COMPRESSORS

ALTIUS offering wide range of Diesel & Electrical compressor for Blast hole drilling, Line drill, Jack Hammer / Rock Drill, surface preparation (Sand / Shot / Dry ice blasting)





## **ALTIUS EQUIPMENTS**

Reg. Head Office:  
No. 140, 1st Floor, 5th Cross, R.K. Layout, 1st Stage  
Padmanabanagara, Bengaluru - 560 070. India

Ph.: +91-80-26390585, +91-80-49581892, +91-9480975162  
Email: [info@altiusequipments.com](mailto:info@altiusequipments.com)

[www.altiusequipments.com](http://www.altiusequipments.com)

Authorised Dealer & Service Support

